

THE DIOTRIBE

Modular Diorama Guidelines

Building Standards for Action Figure Dioramas

By employing a standard set of protocols for constructing dioramas, you will be able to easily interchange walls and floors within your dioramas. A modular diorama is customizable, making the display options limitless.

What is a Modular Diorama?

A diorama module is comprised of interchangeable parts which can be assembled to form a variety of different structures. Modules are built to a set of standards that allow each unit to interface with other units.

Recommended materials:

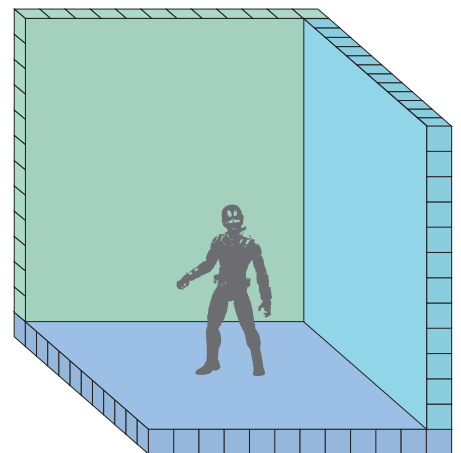
The materials for modular diorama layouts are readily available at most hardware stores:

- 1" thick insulation foam board
- Magnets (3/4" or smaller)
- Steel screws

Why go modular?

The modular approach has many advantages:

- Lightweight materials make transporting modules easy
- Storage is easy since disassembled modules may lay flat
- Scenes can be changed easily
- More possibilities for display and photography
- Prevents creative burnout by letting you experiment in smaller sections
- Module pieces can be combined with those created by other artists



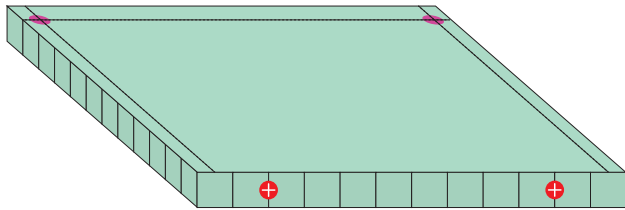
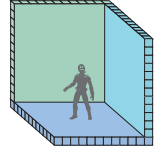
*The DioTribe Modular Diorama Guidelines were created to be the standard for interchangeable module units, but there will be times when the standards just won't work for your diorama — that's okay! The standards are not meant to hinder your creativity, so feel free to modify them to fit your needs, but realize by doing so, your creation may not work with other modular dioramas. **If you are having fun, then you are doing it right!***

THE DIOTRIBE

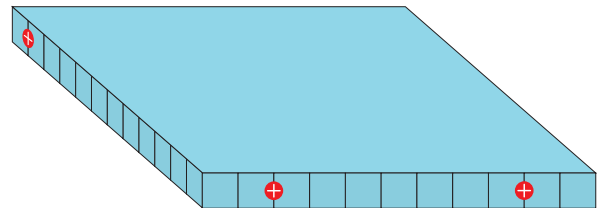
Modular Diorama Guidelines *Building Standards for Action Figure Dioramas*

Basic Building Parts of Diorama Modules

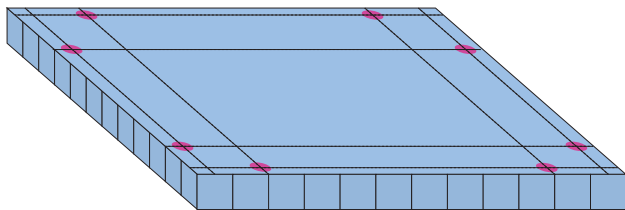
There are three parts to a Diorama Module: 1. Floor, 2 Back Wall, and 3. Side Walls



Back Wall = 12" w x 12" h
Screws go into the bottom edge, 2" from the side
Note: Overall height can be adjusted



Side Walls = 11" w x 12" h
Screws go into the bottom edge, 2" from the side
Screws go in both sides, 1" from the top edge
Note: Overall height can be adjusted



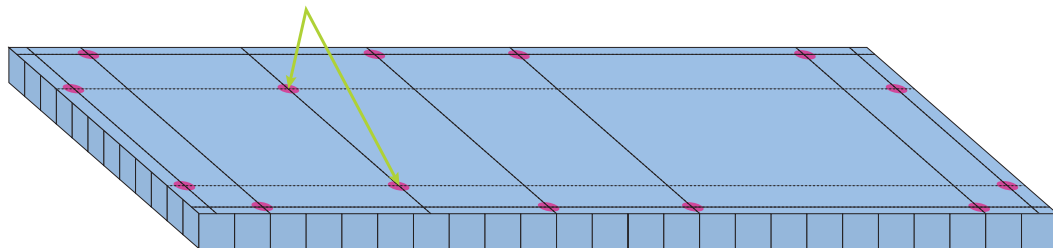
Floor = 12" w x 12" h

● = Magnet ⊕ = Screw

Sample of How to Enlarge Module Parts

While the base modular diorama floor is a 12" square, you may adjust the sizes to suit your needs, just be sure to keep the magnet and screw placement consistent. Here is an example of how to make a floor that is 24" wide:

Optional: Use these magnets only if you want a wall somewhere in the middle of the layout.

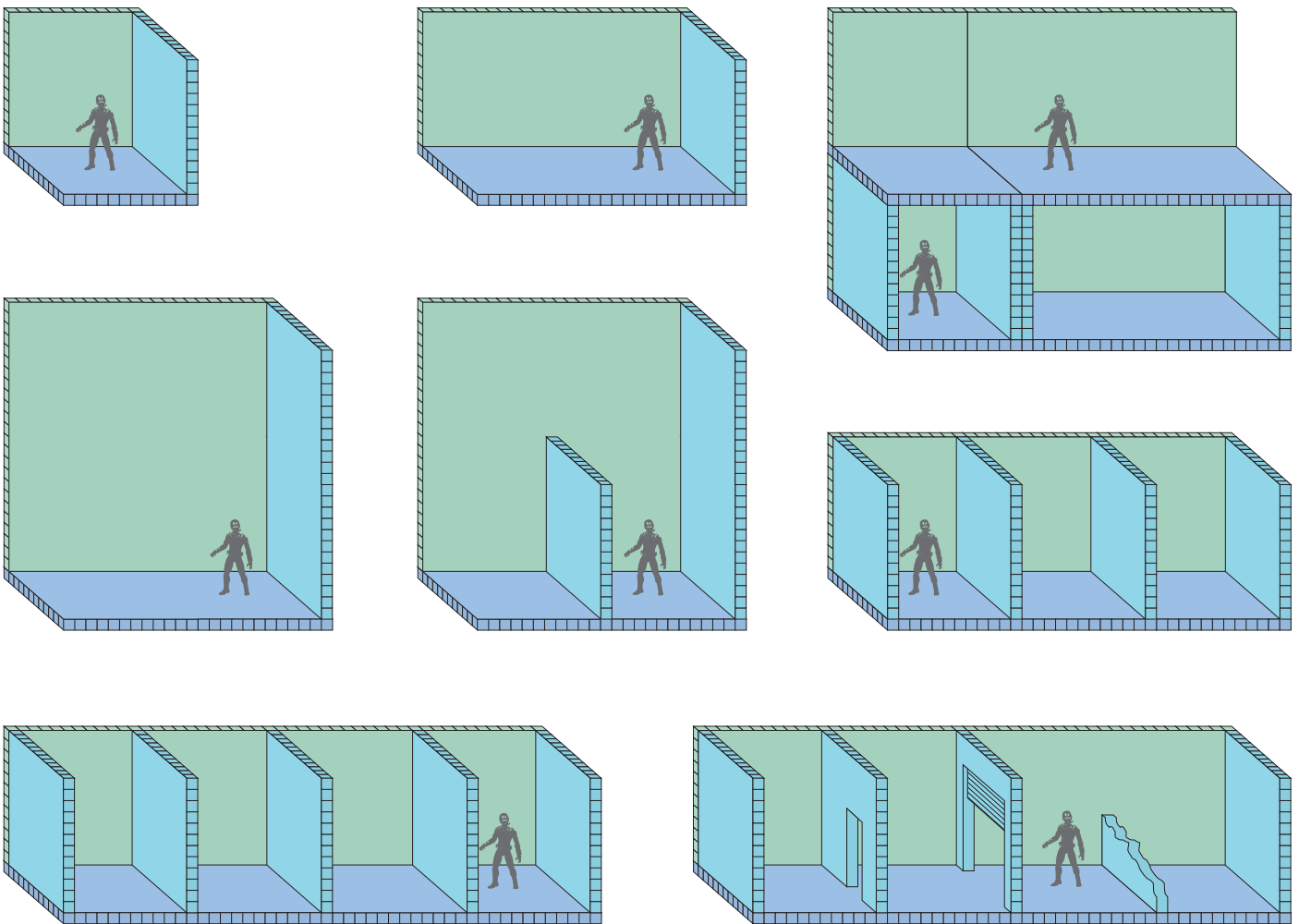


Floor = 24" w x 12" h

THE DIOTRIBE

Modular Diorama Guidelines

Building Standards for Action Figure Dioramas



Sample configurations of Diorama Modules